








NORMACONNECT® FGR Pipe Connections



Perfect connections for pipes
in various applications and materials

NORMA® – Contents

	Page
Preface	4
Approvals	5
Product benefits	6–7
Type series	8
Materials	10–11
 NORMACONNECT® FGR – for axial non-restraint connections:	
 NORMACONNECT® FLEX/FLEX E	12–14
 NORMACONNECT® FLEX 3	16–17
 NORMACONNECT® REP E	18–20
 NORMACONNECT® FGR – for axial restraint connections:	
 NORMACONNECT® GRIP/GRIP E	22–24
 NORMACONNECT® GRIP E-FP	26–27
 NORMACONNECT® PLAST GRIP/PLAST GRIP E	28–29
 NORMACONNECT® COMBI GRIP/COMBI GRIP E	30–31
Accessories	32–33
Branches and distribution partners	34–37

Subject to technical modifications. Prices on request.
All orders are subject to our terms and conditions of sale.

As a quality certified company we guarantee constantly high quality standards. NORMA® products are manufactured using modern production techniques and high value materials. They are safe if used for the purpose specified by us and if our fitting instructions are obeyed. If you have any doubts about possible uses and the correct fitting please contact us for advice.

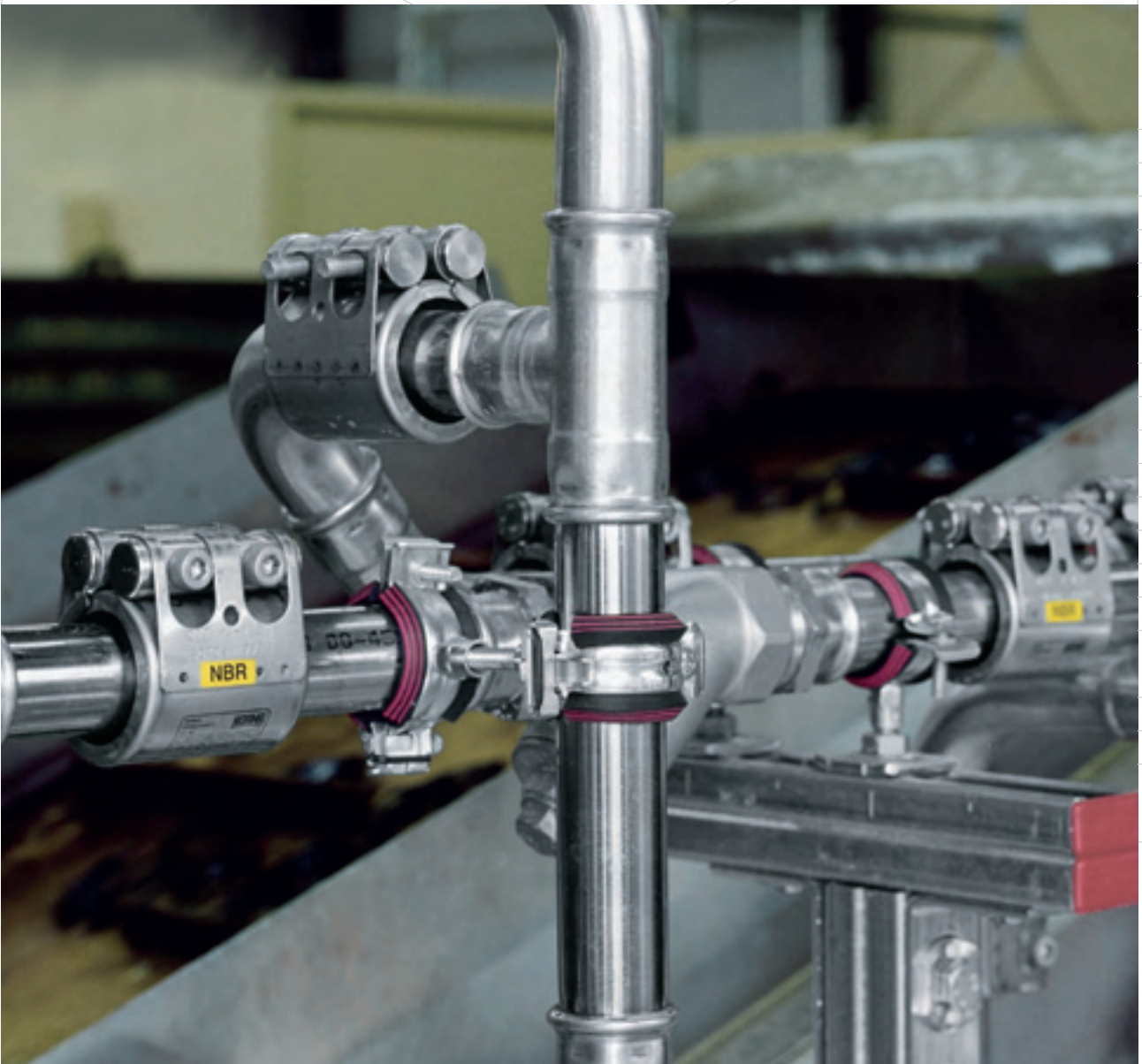
NORMACONNECT® FGR Pipe Connections

Perfect connections for pipes in various applications and materials.

NORMACONNECT® FGR pipe couplings are a compact, economical and reliable means for connecting plain-ended pipes. They are suitable to join plastic and metal pipes and especially pipes made from stainless steel. They can be used in mechanical engineering and construction, shipbuilding, civil engineering and in hydro technology.

Supply pipes as well as exhaust pipes for solid, liquid or gaseous media can be joined easily and safely in a very short period of time even in narrow spaces.

Thanks to the wide range of various types and sizes they are suitable for use both in standard and specialized applications.





FDA



Lloyd's Register



Certified and/or approved in compliance with:
TS 16949
DIN EN ISO 9001
EAQF • **FORD Q1**
DIN EN ISO 14001

Approvals

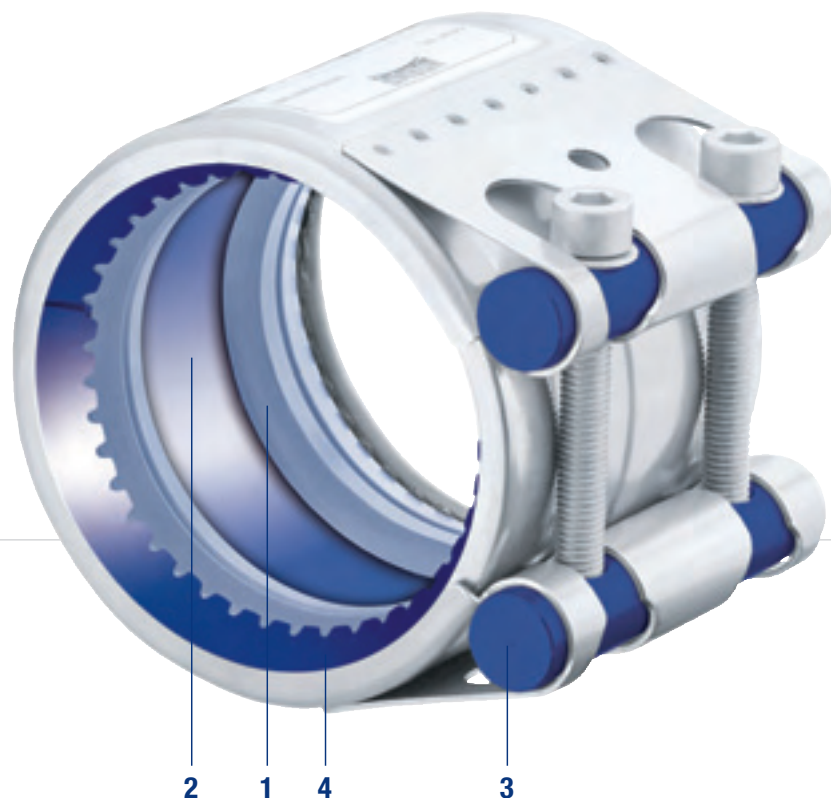
NORMACONNECT® FGR Product benefits

- NORMACONNECT® pipe couplings are an economical alternative to conventional pipe joining techniques for both plastic and metal pipes. All plain-ended pipes can be joined easily by hand. The ready to fit coupling is pushed over the pipe ends and then aligned and rotated to any fitting position. Tightening the two bolts alternately with a torque wrench is all it takes to make a safe fitting.
- Sealing reliability is also ensured under the condition of slight axial misalignment, angular deflection and even gaps between pipe ends of up to 35 mm (cf. table).
- Pressure surges, vibration and related noise are absorbed to a considerable extent.
- Economy is guaranteed due to short assembly times without the necessity of prior pipe alignment or treatment of pipe ends; in addition, the pipe couplings are reusable.

Range of applications

The NORMACONNECT® pipe coupling is a reliable connection for thick- and thin-walled pipes which conforms to the latest DIN Standard 86128.

Feed and return lines for liquids, gas and solids (for mechanical engineering and construction, civil engineering, shipbuilding, pipeline construction, power stations, mining, filters, water technology, etc.) are joined quickly, easily and safely using NORMACONNECT® pipe couplings.

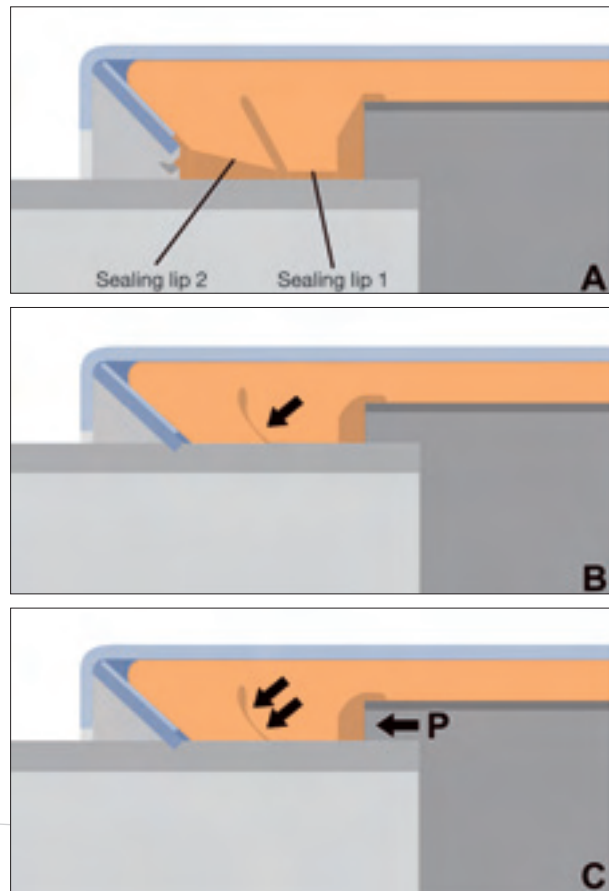


1. Double-lip sealing system

The patented double-lip sealing system (Fig. A) of the NORMA**CONNECT**® pipe couplings offers double safety; It provides maximum sealability at both low and high operating pressures.

When the bolts of the coupling are tightened sealing lip 1 is pressed onto sealing lip 2, thus providing a highly reliable seal even under the condition of low pressures, vacuum or extreme loads acting on the joint (Fig. B).

The special sealing lip design means that when the internal pressure (P) increases, the sealing lips are pressed more firmly onto the pipe surface ensuring an even stronger seal (Fig. C).



2. Standard strip insert

All NORMA**CONNECT**® pipe couplings are factory equipped with the standard strip insert (2).

The strip insert protects the sealing sleeve from increased mechanical and chemical loads.

It also prevents the sealing sleeve from moisture expansion and allows larger gaps between the pipe ends to be connected.

Furthermore, it allows larger angular deflections and misalignment.

With the strip insert the couplings can also be used for both vacuum and high pressure applications without any problems.

The strip inserts are made from plastic material or stainless steel and should be chosen depending on the application and the pipe material.

3. Heavy duty lock bars

For NORMA**CONNECT**® pipe couplings we use lock bars (3) with a larger diameter. Thus the rigidity of the coupling is increased and the engagement of the threaded end of the locking bolts is considerably improved.

4. Anchoring ring with conically stamped teeth

The anchoring ring (4) with conically stamped teeth indents into the pipe surface and provides safe and strong axial restraint. Owing to the special design the coupling is able to withstand even high vibration loads.

5. Protection ring

The protection ring (cf. page 12) protects the sealing sleeve from UV rays, fire, etc. and increases the flexural strength of the coupling.

NORMACONNECT® FGR Type series

The NORMACONNECT® product range features the correct coupling for any conceivable application. The current range of pipe couplings comprises the following types:

NORMACONNECT® FGR – for axial non-restraint connections:



NORMACONNECT® FLEX/FLEX E
Axial non-restraint pipe couplings used to connect metal and/or plastic pipes



NORMACONNECT® FLEX 3
Axial non-restraint pipe couplings used to connect metal and/or plastic pipes; extra wide band



NORMACONNECT® REP E
Repair couplings used to connect and seal restrained metal and plastic pipes

NORMACONNECT® FGR – for axial restraint connections:



NORMACONNECT® GRIP/GRIP E
Axial restraint pipe couplings used to connect metal pipes with plastic pipes



NORMACONNECT® GRIP E-FP
Axial restraint pipe couplings with integrated flame protection used to connect metal pipes



NORMACONNECT® PLAST GRIP/PLAST GRIP E
Axial restraint pipe couplings used to connect plastic pipes



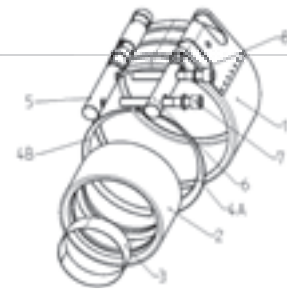
NORMACONNECT® COMBI GRIP/COMBI GRIP E
Axial restraint pipe couplings used to connect metal pipes with plastic pipes

Coupling types and suitable applications:

Pipes to be connected	OD (mm)	FLEX	FLEX E	FLEX 3	REP E from 35 mm	GRIP	GRIP E	GRIP E-FP	PLAST GRIP	PLAST GRIP E	COMBI GRIP	COMBI GRIP E
Metal + Metal	26.9 up to 170.0	70 up to 32 bar	70 up to 32 bar	-	60 up to 32 bar	70 up to 32 bar	70 up to 32 bar	60 up to 32 bar	-	-	-	-
	180.0 up to 419.0	-	-	-	-	-	-	20 up to 6.5 bar	-	-	-	-
	180.0 up to 609.6	-	-	-	-	-	20 up to 2 bar	-	-	-	-	-
	180.0 up to 711.2	-	-	-	-	32 up to 2.5 bar	-	-	-	-	-	-
	180.0 up to 1219.2	50 up to 7 bar	30 up to 4 bar	-	30 up to 4 bar	-	-	-	-	-	-	-
326.0 up to 2032.0	-	-	16.5 up to 1.5	-	-	-	-	-	-	-	-	
Plastic + Plastic	40.0 up to 406.4	-	-	-	-	-	-	-	16 bar up to 6 bar	-	-	-
	40.0 up to 170.0	-	-	-	-	-	-	-	-	16 bar	-	-
	26.9 up to 170.0	16 bar	16 bar	-	16 bar	-	-	-	-	-	-	-
	180.0 up to 1219.2	16 bar up to 7 bar	16 bar up to 4 bar	-	16 up to 4 bar	-	-	-	-	-	-	-
	38/40 up to 160/168.3	-	-	-	-	-	-	-	-	-	16 bar	16 bar
Metal + Plastic	200/204 up to 400/406.4	-	-	-	-	-	-	-	-	-	16 bar up to 6 bar	-
	26.9 up to 168.3	16 bar	16 bar	-	-	-	-	-	-	-	-	-
	180.0 up to 1219.2	16 bar up to 7 bar	16 bar up to 7 bar	-	-	-	-	-	-	-	-	-

For pressure values admissible in shipbuilding please refer to the tables on pages 13, 14, 23, 24, 29 and 31.

NORMACONNECT® FGR Materials



Components and materials in accordance with DIN standard

NORMACONNECT® pipe couplings are available in the materials W2, W4 and W5.

The support ring is only available in W5 material.

NORMACONNECT® Materials Summary • Table contents = DIN-values only.

W2						
No.	Component	FLEX/FLEX E	GRIP/GRIP E	COMBI GRIP/ COMBI GRIP E	PLAST GRIP/ PLAST GRIP E	REP E
1	Housing with bridge	1.4301	1.4301	1.4301	1.4301	1.4301
2	Sealing sleeve	EPDM/NBR	EPDM/NBR	EPDM/NBR	EPDM/NBR	EPDM/NBR
3	Strip insert ¹⁾	1.4571/PA-GF	1.4571/PA-GF	1.4571/PA-GF	1.4571/PA-GF	1.4571
4 A	Anchoring ring for metal pipes ²⁾	–	1.4310	1.4310	–	–
4 A	Anchoring ring for plastic pipes ²⁾	–	–	PA-GF-NS ³⁾	PA-GF-NS ³⁾	–
4 B	Protection ring	1.4571	–	–	–	–
5 + 6	Solid lock bars	1.0737	1.0737	1.0737	1.0737	1.0737
5 + 6	Hollow lock bars	1.0580	1.0580	1.0580	1.0580	1.0580
7	Locking bolts	1.7220	1.7220	1.7220	1.7220	1.7220

W4						
No.	Component	FLEX/FLEX E	GRIP/GRIP E	COMBI GRIP/ COMBI GRIP E	PLAST GRIP/ PLAST GRIP E	REP E
1	Housing with bridge	1.4301	1.4301	1.4301	1.4301	1.4301
2	Sealing sleeve	EPDM/NBR	EPDM/NBR	EPDM/NBR	EPDM/NBR	EPDM/NBR
3	Strip insert ¹⁾	1.4571/PA-GF	1.4571/PA-GF	1.4571/PA-GF	1.4571/PA-GF	1.4571
4 A	Anchoring ring for metal pipes ²⁾	–	1.4310	1.4310	–	–
4 A	Anchoring ring for plastic pipes ²⁾	–	–	PA-GF-NS ³⁾	PA-GF-NS ³⁾	–
4 B	Protection ring	1.4571	–	–	–	–
5 + 6	Solid lock bars	1.4301	1.4301	1.4301	1.4301	1.4301
5 + 6	Hollow lock bars	1.4571	1.4571	1.4571	1.4571	1.4571
7	Locking bolts	1.4404	1.4404	1.4404	1.4404	1.4404
8	Washer	1.4571	1.4571	1.4571	1.4571	1.4571

W5						
No.	Component	FLEX/FLEX E FLEX 3	GRIP/GRIP E GRIP E-FP	COMBI GRIP/ COMBI GRIP E	PLAST GRIP/ PLAST GRIP E	REP E
1	Housing with bridge	1.4571	1.4571	1.4571	1.4571	1.4571
2	Sealing sleeve	EPDM/NBR	EPDM/NBR	EPDM/NBR	EPDM/NBR	EPDM/NBR
3	Strip insert ¹⁾	1.4571/PA-GF	1.4571/PA-GF	1.4571/PA-GF	1.4571/PA-GF	1.4571
4 A	Anchoring ring for metal pipes ²⁾	–	1.4310	1.4310	–	–
4 A	Anchoring ring for plastic pipes ²⁾	–	–	PA-GF-NS ³⁾	PA-GF-NS ³⁾	–
4 B	Protection ring	1.4571	–	–	–	–
5 + 6	Solid lock bars	1.4401	1.4401	1.4401	1.4401	1.4401
5 + 6	Hollow lock bars	1.4571	1.4571	1.4571	1.4571	1.4571
7	Locking bolts	1.4404	1.4404	1.4404	1.4404	1.4404
8	Washer	1.4571	1.4571	1.4571	1.4571	1.4571

¹⁾ PA-GF plastic strip inserts are only for pipe couplings used in shipbuilding applications.

²⁾ COMBI GRIP couplings are equipped with two different anchoring rings (1 x for the metal end, 1 x for the plastic end).

³⁾ PA-GF: PA reinforced with fibre glass; NS: new silver.

Sealing sleeves: Areas of application & temperature resistance

Material of seal	EPDM	NBR
Temperature range	-30 °C up to +125 °C OD 26.9 up to 170 mm -20 °C up to +80 °C OD > 180 mm	-20 °C up to +80 °C
Media	Drinking water Alcohols Compressed air Solids	Water Oils Gases (combustible) Fuels Hydrocarbon solutions



NORMACONNECT® FLEX/FLEX E

THE PROTECTIVE PIPE COUPLING

NORMACONNECT® FLEX /FLEX E pipe couplings are used for connecting restrained pipes. Both metal and plastic pipes can be connected safely and quickly. With NORMACONNECT® FLEX/FLEX E pipe couplings sealing reliability is also ensured under the condition of gaps between pipe ends which are compensated. Given outside pipe diameters of > 180 mm the FLEX type is suitable for high pressure and the FLEX E type for low pressure applications.

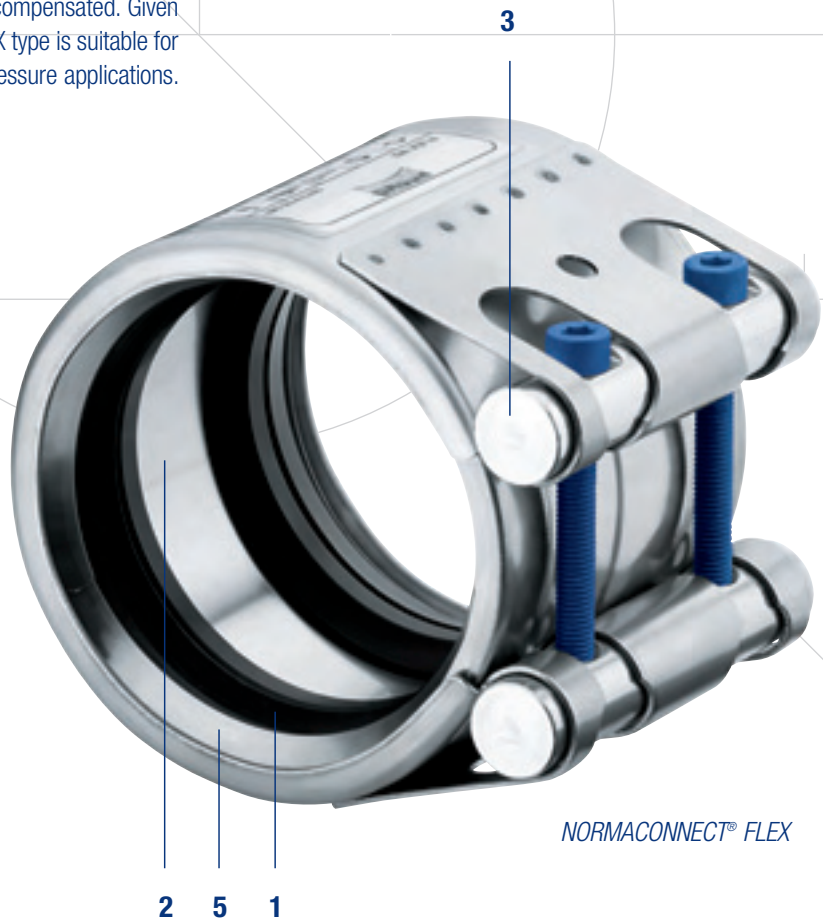
NORMACONNECT® FLEX /FLEX E Features:

- 1. Double-lip sealing system*
- 2. Standard strip insert*
- 3. Heavy duty lock bars*
- 5. Protection ring*

* For details refer to Product benefits pages 6–7.



NORMACONNECT®
FLEX E



NORMACONNECT® FLEX

Enquiries/ordering

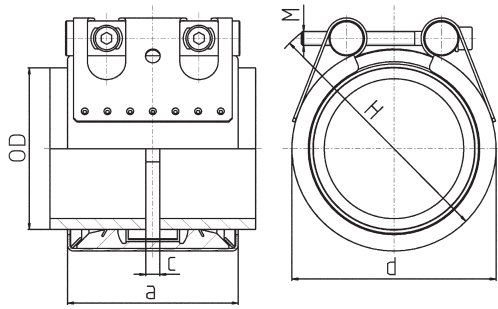
When making enquiries or placing orders please indicate:

Example:

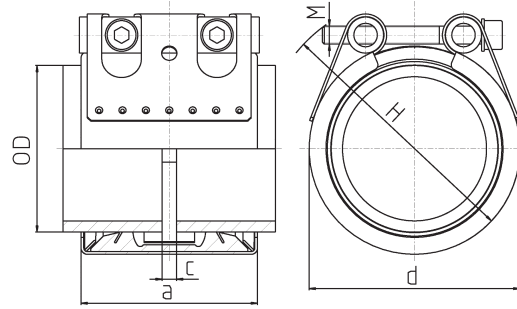
- | | |
|---|-------|
| 1. The type (FLEX, FLEX E) | FLEX® |
| 2. The required material (W2, W4, W5), (cf. page 10) | W2 |
| 3. The pipe outside diameter OD, (cf. table) | 609.6 |
| 4. The sealing sleeve material (EPDM, NBR) | EPDM |

For this example, the order text would read: **NORMACONNECT® FLEX – W2 – 609.6 - EPDM**



NORMACONNECT® FLEX/FLEX E



NORMACONNECT® FLEX



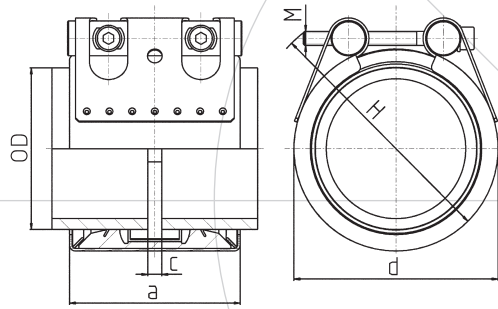
NORMACONNECT® FLEX E

OD (mm)	Clamping range OD _{min} – OD _{max} (mm)	PN ¹⁾  (bar)	WP ²⁾  (bar)	C _{max} (mm)	Dimensions		
					a (mm)	d clamped approx. (mm)	H approx. (mm)
26.9	26.4 – 27.5	16	70	3	67	50	70
28.0	27.5 – 28.5	16	70	3	67	50	70
30.0	29.5 – 30.6	16	70	3	67	50	70
33.7	33.0 – 34.3	16	60	3	67	55	75
35.0	34.5 – 35.6	16	60	8	63	55	75
38.0	37.5 – 38.6	16	60	8	63	60	80
42.4	41.7 – 43.0	16	50	8	63	65	85
44.5	44.0 – 45.1	16	50	8	63	65	85
48.3	47.6 – 50.5	16	50	8	63	70	90
54.0	53.3 – 54.6	16	50	17	78	75	95
57.0	56.3 – 57.7	16	50	17	78	80	100
60.3	59.5 – 61.0	16	40	17	78	85	105
63.0	62.2 – 63.9	16	40	17	78	85	105
70.0	69.0 – 71.0	16	40	25	98	90	110
73.0	72.1 – 73.8	16	40	25	98	95	115
76.1	75.2 – 77.0	16	35	25	98	100	120
78.0	77.1 – 78.9	16	35	25	98	100	120
80.0	79.0 – 80.8	16	35	25	98	100	120
84.0	83.0 – 85.0	16	35	25	98	105	125
88.9	87.0 – 89.9	16	35	25	98	110	130
98.0	96.9 – 99.0	16	35	25	98	120	140
101.6	100.4 – 102.8	16	35	25	98	125	145
104.0	102.8 – 106.1	16	35	25	98	125	145
108.0	106.8 – 109.2	16	35	25	98	130	150
110.0	108.8 – 111.4	16	35	25	98	130	150
114.3	113.0 – 115.5	16	35	25	98	135	155
118.0	116.6 – 119.2	16	35	25	98	140	160
122.0	120.8 – 123.2	16	32	35	113	145	165
125.0	123.6 – 126.5	16	32	35	113	145	165
129.0	127.6 – 131.1	16	32	35	113	155	185
133.0	131.5 – 134.4	16	32	35	113	160	190
139.7	138.1 – 141.6	16	32	35	113	165	195
141.3	139.6 – 142.8	16	32	35	113	170	200
144.0	142.4 – 145.5	16	32	35	113	170	200
154.0	152.3 – 156.1	16	32	35	113	180	210
159.0	157.3 – 160.7	16	32	35	113	185	215
168.3	166.5 – 170.1	16	32	35	113	195	225
170.0	168.2 – 171.9	16	32	35	113	195	225

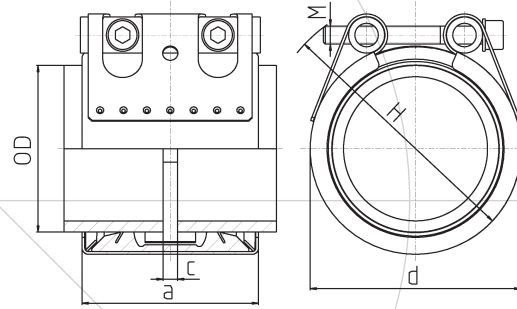
¹⁾ PN (nominal pressure) is the max. admissible working pressure in shipbuilding, based on a safety factor of ≥ 4 .

²⁾ WP is the max. working pressure in industrial applications, based on a safety factor as per NORMA specification.

NORMACONNECT® FLEX/FLEX E



NORMACONNECT® FLEX



NORMACONNECT® FLEX E

OD (mm)	Clamping range		MAWP ³⁾		WP ²⁾		C _{max} (mm)	Clamping range			
	OD _{min}	OD _{max}	[Image]		[Image]			a (mm)		d clamped approx. (mm)	
			FLEX	FLEX E	FLEX	FLEX E		FLEX	FLEX E		
180.0	178.0	182.0	23.5	13.5	50.0	30.0	35	141	139	210	240
193.7	192.0	196.0	23.5	13.5	46.0	28.0	35	141	139	225	255
206.0	202.0	208.0	20.0	13.5	43.0	26.5	35	141	139	240	270
219.1	216.0	221.0	18.0	13.5	40.5	23.0	35	141	139	250	280
225.0	222.0	227.0	18.0	12.0	40.0	23.0	35	141	139	255	285
229.9	228.0	232.0	18.0	12.0	39.0	23.0	35	141	139	260	290
244.5	242.0	247.0	18.0	12.0	37.0	22.0	35	141	139	275	305
254.0	250.0	256.0	18.0	12.0	35.5	21.0	35	141	139	285	315
267.0	264.0	269.0	18.0	12.0	33.5	20.0	35	141	139	300	330
273.0	270.0	275.0	17.0	12.0	33.0	20.0	35	141	139	305	335
306.0	302.0	308.0	15.0	9.0	29.0	17.5	35	141	139	340	370
323.9	320.0	327.0	15.0	9.0	28.0	17.5	35	141	139	355	385
326.0	322.0	329.0	13.0	9.0	27.5	16.5	35	141	139	360	390
355.6	352.0	359.0	13.0	9.0	25.0	15.0	35	141	139	390	420
406.4	402.0	410.0	10.0	7.5	22.0	14.0	35	141	139	440	470
429.0	426.0	431.0	7.5	5.5	21.0	13.0	35	141	139	460	490
442.0	439.0	444.0	7.5	5.5	20.0	13.0	35	141	139	475	505
457.2	454.0	459.0	7.5	5.5	19.5	12.0	35	141	139	490	520
508.0	505.0	510.0	7.5	5.5	17.0	11.0	35	141	139	540	570
531.0	528.0	534.0	7.5	5.5	16.0	10.5	35	141	139	565	595
558.8	556.0	562.0	7.5	5.5	15.5	10.0	35	141	139	590	620
609.6	606.0	613.0	6.0	4.5	14.0	9.0	35	141	139	640	670
634.0	631.0	637.0	5.0	4.5	13.5	8.0	35	141	139	665	695
711.2	707.0	715.0	5.0	4.0	12.0	7.0	35	141	139	745	775
762.0	758.0	766.0	4.5	3.2	11.0	7.0	35	141	139	795	885
812.8	808.0	817.0	4.5	3.2	10.5	6.5	35	141	139	845	935
914.4	909.0	919.0	3.3	2.0	9.5	5.5	35	141	139	945	1035
1016.0	1013.0	1019.0	3.3	2.0	8.0	5.0	35	141	139	1050	1140
1117.5	1114.0	1120.0	3.3	2.0	7.5	4.5	35	141	139	1150	1240
1219.2	1216.0	1222.0	3.3	2.0	7.0	4.0	35	141	139	1250	1340

²⁾ WP is the max working pressure in industrial applications, based on a safety factor as per NORMA specification.

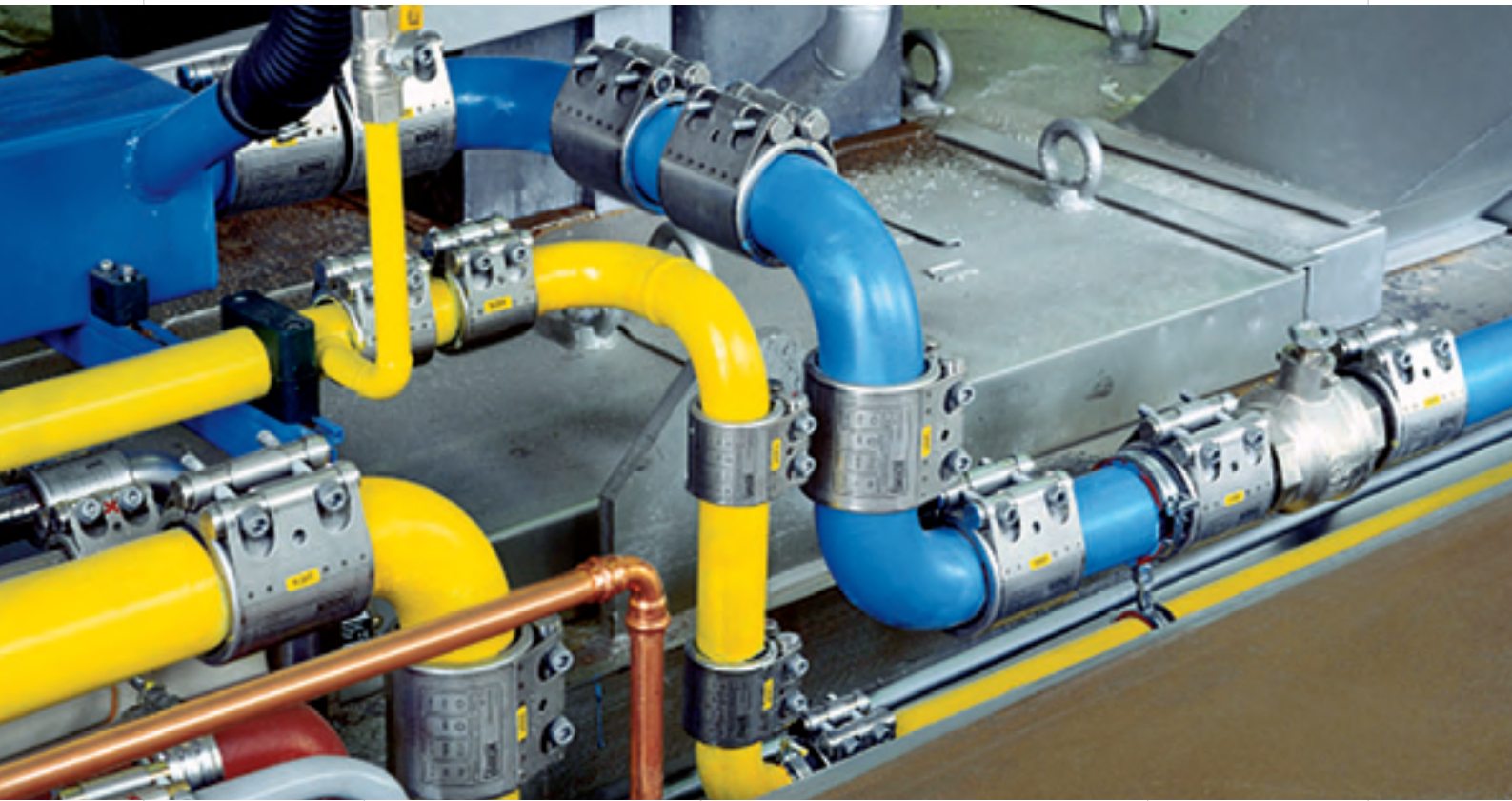
³⁾ MAWP (maximum allowable working pressure) is the max. admissible working pressure in shipbuilding, based on a safety factor of ≥ 4 .

For the pipes to be joined the max. **difference in diameter** must not exceed 5 mm.

All pipe couplings ≥ 800 mm are in 2 parts.

Sizes > 1219.2 mm on request.

Higher pressures on request.



NORMACONNECT® FLEX 3

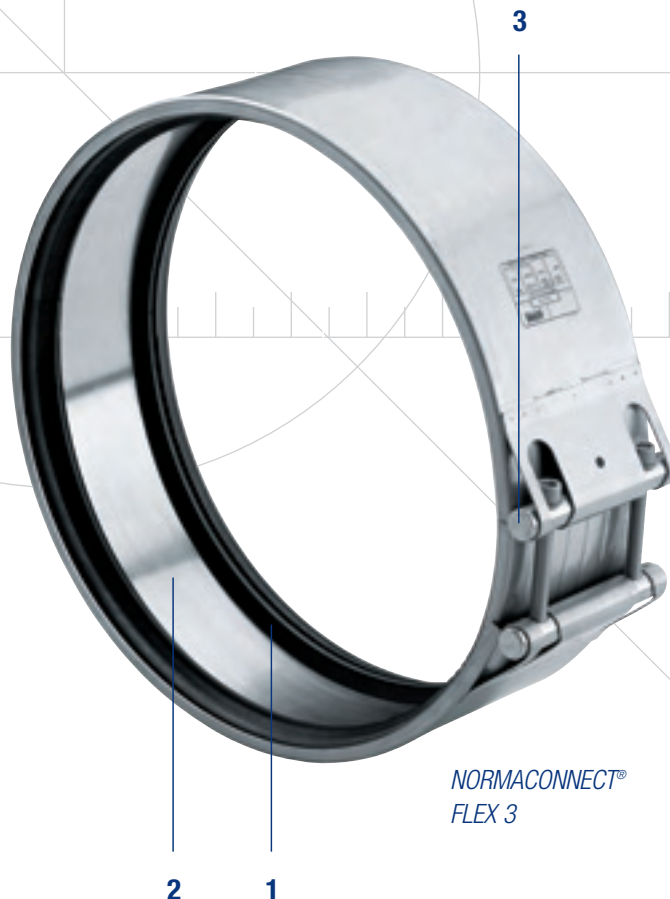
THE PIPE COUPLING WITH EXTRA WIDE BAND

NORMACONNECT® FLEX 3 featuring an extra wide band is an axial non-restraint coupling used to connect metal and/or plastic pipes quickly and safely.

NORMACONNECT® FLEX 3 Features:

- 1. Double-lip sealing system*
- 2. Standard strip insert*
- 3. Heavy duty lock bars*

* For details please refer to Product benefits pages 6–7.



NORMACONNECT®
FLEX 3



NORMACONNECT®
FLEX 3 pipe coupling
with extra wide band.

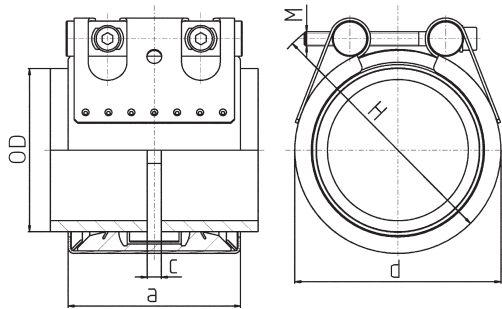
Enquiries/ordering

When making enquiries or placing orders please indicate:

Example:

- | | |
|---|--------|
| 1. The type (FLEX 3) | FLEX 3 |
| 2. The required material (W5), (cf. page 10) | W5 |
| 3. The pipe outside diameter OD, (cf. table) | 609.6 |
| 4. The sealing sleeve material (EPDM, NBR) | EPDM |

For this example, the order text would read: **NORMACONNECT® FLEX 3 – W5 – 609.6 - EPDM**



NORMACONNECT® FLEX 3

OD (mm)	Clamping range		WP ¹⁾ (bar)	C _{max} (mm)	Clamping range		
	OD _{min} (mm)	– OD _{max} (mm)			a (mm)	d clamped approx. (mm)	H approx. (mm)
326.0	322.0	– 329.0	16.5	65	211	365	405
355.6	352.0	– 359.0	15.5	65	211	395	435
406.4	402.0	– 410.0	13.5	65	211	445	485
429.0	426.0	– 431.0	12.5	65	211	465	505
442.0	439.0	– 444.0	12.0	65	211	480	520
457.2	454.0	– 459.0	12.0	65	211	495	535
508.0	505.0	– 510.0	10.5	65	211	545	585
531.0	528.0	– 534.0	10.0	65	211	570	610
558.8	556.0	– 562.0	9.5	65	211	595	635
609.6	606.0	– 613.0	9.0	65	211	645	685
634.0	631.0	– 637.0	8.5	65	211	670	710
711.2	707.0	– 715.0	7.5	65	211	750	790
762.0	758.0	– 766.0	7.0	65	211	800	840
812.8	808.0	– 817.0	6.5	65	211	850	890
914.4	909.0	– 919.0	6.0	65	211	950	990
1016.0	1013.0	– 1019.0	5.0	65	211	1055	1095
1117.5	1114.0	– 1120.0	4.5	65	211	1155	1195
1219.2	1216.0	– 1222.0	4.0	65	211	1255	1295
1320.8	1314.0	– 1328.0	3.0	65	211	1360	1400
1422.4	1415.0	– 1430.0	3.0	65	211	1460	1500
1524.0	1516.0	– 1532.0	2.5	65	211	1560	1600
1625.6	1617.0	– 1634.0	2.5	65	211	1665	1705
1727.2	1718.0	– 1736.0	2.0	65	211	1765	1805
1828.8	1819.0	– 1838.0	2.0	65	211	1865	1905
1930.4	1920.0	– 1940.0	2.0	65	211	1970	2010
2032.0	2021.0	– 2042.0	1.5	65	211	2070	2110

¹⁾ WP is the max working pressure in industrial applications, based on a safety factor as per NORMA specification.

For the pipes to be joined the max. **difference in diameter** must not exceed 5 mm.

All pipe couplings ≥ 800 mm are in 2 parts.

NORMACONNECT® REP E

THE REPAIR COUPLING

NORMACONNECT® REP E are non-restraint repair couplings. They are used to connect and/or seal damaged metal and plastic pipes. They also enable repairs to be carried out easily, quickly and safely without the need to dismantle the pipes.

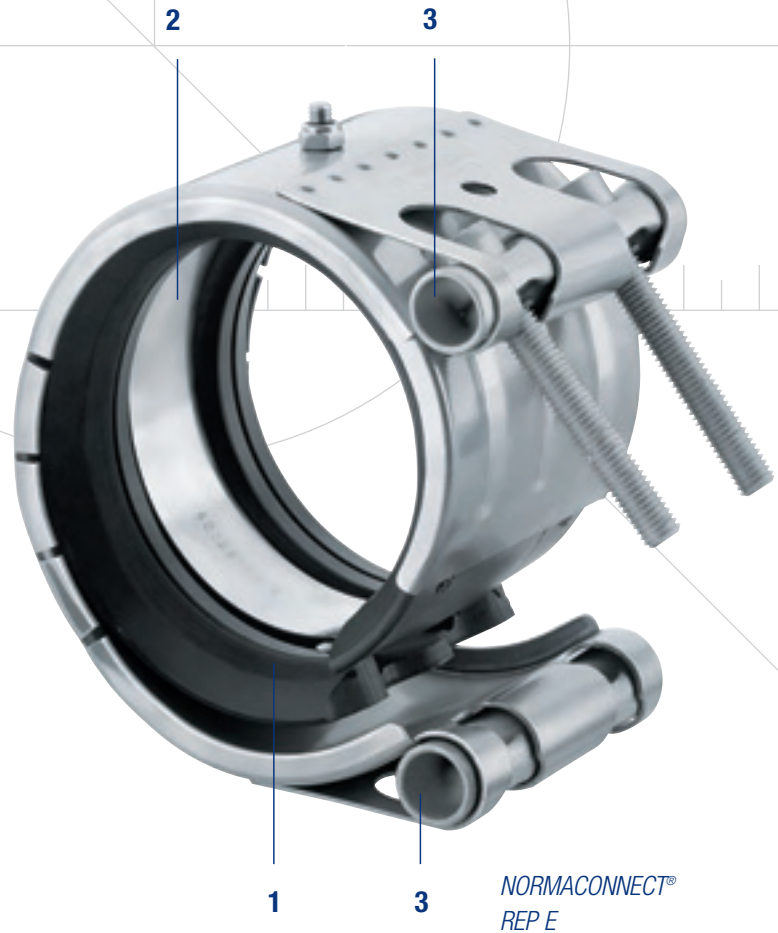
NORMACONNECT® REP E Features:

- 1. Double-lip sealing system*
- 2. Standard strip insert*
- 3. Heavy duty lock bars*

* For details refer to Product benefits pages 6-7.



NORMACONNECT®
REP E



NORMACONNECT®
REP E

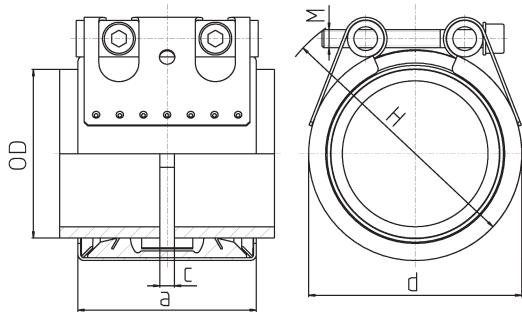
Enquiries/ordering

When making enquiries or placing orders please indicate:

Example:

- | | |
|---|-------|
| 1. The type (REP E) | REP E |
| 2. The required material (W5), (cf. page 10) | W5 |
| 3. The pipe outside diameter OD, (cf. table) | 609.6 |
| 4. The sealing sleeve material (EPDM, NBR) | EPDM |

For this example, the order text would read: **NORMACONNECT® REP E – W5 – 609.6 – EPDM**

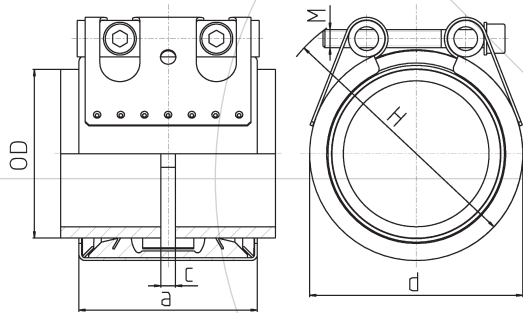


NORMACONNECT® REP E


OD (mm)	Clamping range		WP ¹⁾ (bar)	C _{max} (mm)	Clamping range		
	OD _{min} (mm)	– OD _{max} (mm)			a (mm)	d clamped approx. (mm)	H approx. (mm)
35.0	34.5	– 35.6	60	8	63	55	75
38.0	37.5	– 38.6	60	8	63	60	80
42.4	41.7	– 43.0	50	8	63	65	85
44.5	44.0	– 45.1	50	8	63	65	85
48.3	47.6	– 50.5	50	8	63	70	90
54.0	53.3	– 54.6	50	17	78	75	95
57.0	56.3	– 57.7	50	17	78	80	100
60.3	59.5	– 61.0	40	17	78	85	105
63.0	62.2	– 63.9	40	17	78	85	105
70.0	69.0	– 71.0	40	25	98	90	110
73.0	72.1	– 73.8	40	25	98	95	115
76.1	75.2	– 77.0	35	25	98	100	120
78.0	77.1	– 78.9	35	25	98	100	120
80.0	79.0	– 80.8	35	25	98	100	120
84.0	83.0	– 85.0	35	25	98	105	125
88.9	87.0	– 89.9	35	25	98	110	130
98.0	96.9	– 99.0	35	25	98	120	140
101.6	100.4	– 102.8	35	25	98	125	145
104.0	102.8	– 106.1	35	25	98	125	145
108.0	106.8	– 109.2	35	25	98	130	150
110.0	108.8	– 111.4	35	25	98	130	150
114.3	113.0	– 115.5	35	25	98	135	155
118.0	116.6	– 119.2	35	25	98	140	160
122.0	120.8	– 123.2	32	35	113	145	165
125.0	123.6	– 126.5	32	35	113	145	165
129.0	127.6	– 131.1	32	35	113	155	185
133.0	131.5	– 134.4	32	35	113	160	190
139.7	138.1	– 141.6	32	35	113	165	195
141.3	139.6	– 142.8	32	35	113	170	200
144.0	142.4	– 145.5	32	35	113	170	200
154.0	152.3	– 156.1	32	35	113	180	210
159.0	157.3	– 160.7	32	35	113	185	215
168.3	166.5	– 170.1	32	35	113	195	225
170.0	168.2	– 171.9	32	35	113	195	225

¹⁾ WP is the max working pressure in industrial applications, based on a safety factor as per NORMA specification.

NORMACONNECT® REP E

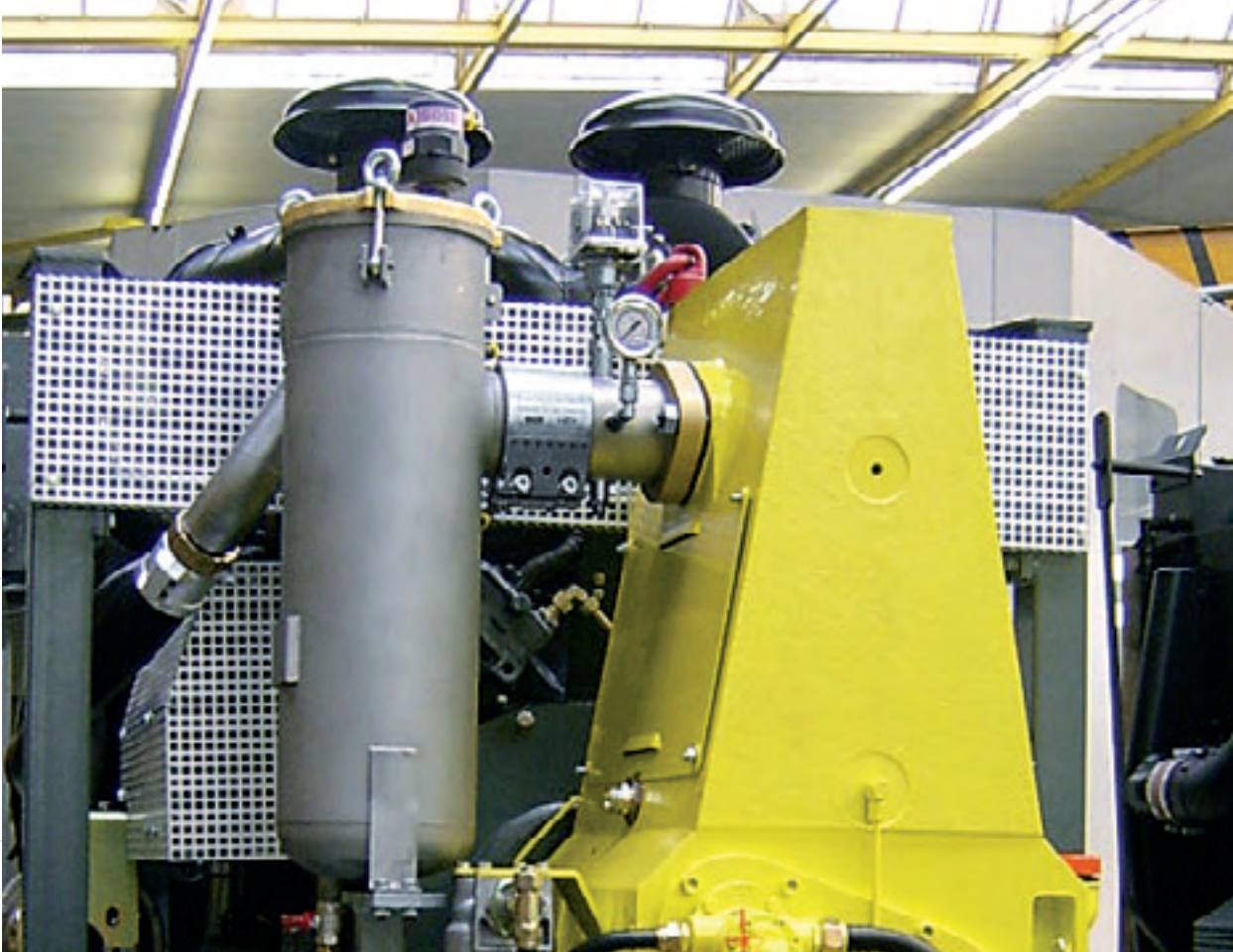
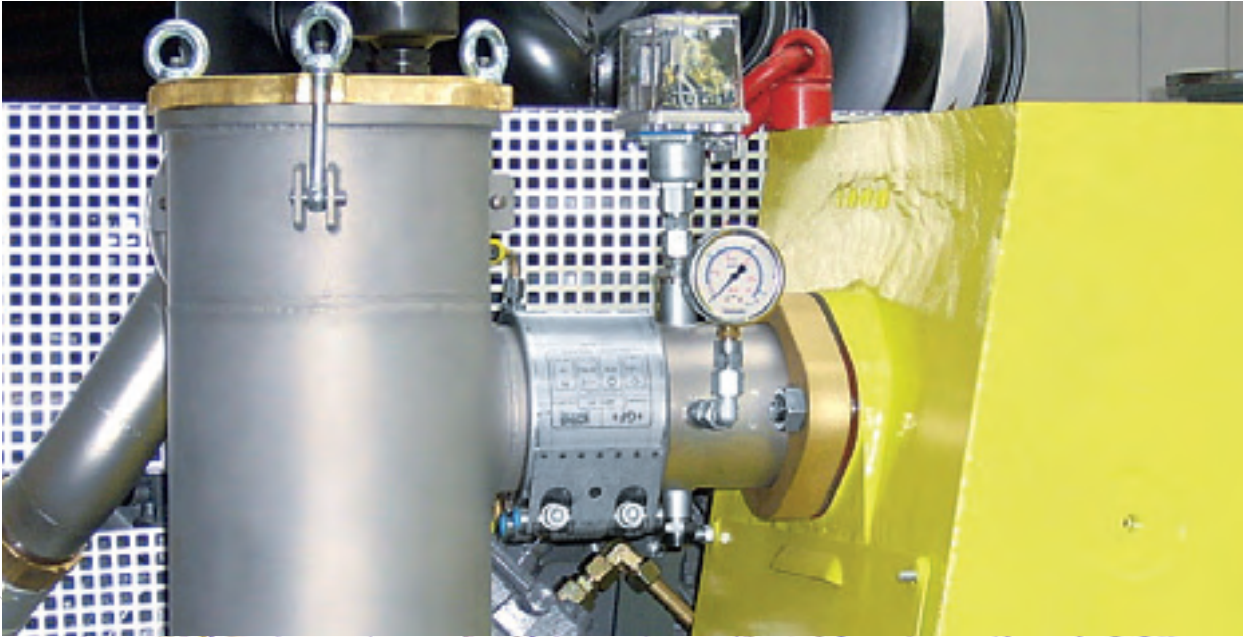


NORMACONNECT® REP E

OD (mm)	Clamping range		WP ¹⁾  (bar)	C _{max} (mm)	Clamping range		
	OD _{min} (mm)	– OD _{max} (mm)			a (mm)	d clamped approx. (mm)	H approx. (mm)
180.0	178.0	– 182.0	30.0	35	139	210	240
193.7	192.0	– 196.0	28.0	35	139	225	255
206.0	202.0	– 208.0	26.5	35	139	240	270
219.1	216.0	– 221.0	23.0	35	139	250	280
225.0	222.0	– 227.0	23.0	35	139	255	285
229.9	228.0	– 232.0	23.0	35	139	260	290
244.5	242.0	– 247.0	22.0	35	139	275	305
254.0	250.0	– 256.0	21.0	35	139	285	315
267.0	264.0	– 269.0	20.0	35	139	300	330
273.0	270.0	– 275.0	20.0	35	139	305	335
306.0	302.0	– 308.0	17.5	35	139	340	370
323.9	320.0	– 327.0	17.5	35	139	355	385
326.0	322.0	– 329.0	16.5	35	139	360	390
355.6	352.0	– 359.0	15.0	35	139	390	420
406.4	402.0	– 410.0	14.0	35	139	440	470
429.0	426.0	– 431.0	13.0	35	139	460	490
442.0	439.0	– 444.0	13.0	35	139	475	505
457.2	454.0	– 459.0	12.0	35	139	490	520
508.0	505.0	– 510.0	11.0	35	139	540	570
531.0	528.0	– 534.0	10.5	35	139	565	595
558.8	556.0	– 562.0	10.0	35	139	590	620
609.6	606.0	– 613.0	9.0	35	139	640	670
634.0	631.0	– 637.0	8.0	35	139	665	695
711.2	707.0	– 715.0	7.0	35	139	745	775
762.0	758.0	– 766.0	7.0	35	139	795	825
812.8	808.0	– 817.0	6.5	35	139	845	875
914.4	909.0	– 919.0	5.5	35	139	945	975
1016.0	1013.0	– 1019.0	5.0	35	139	1050	1080
1117.5	1114.0	– 1120.0	4.5	35	139	1150	1180
1219.2	1216.0	– 1222.0	4.0	35	139	1250	1280

¹⁾ WP is the max working pressure in industrial applications, based on a safety factor as per NORMA specification.

Sizes > 1219.2 mm on request.



NORMACONNECT® GRIP/GRIP E

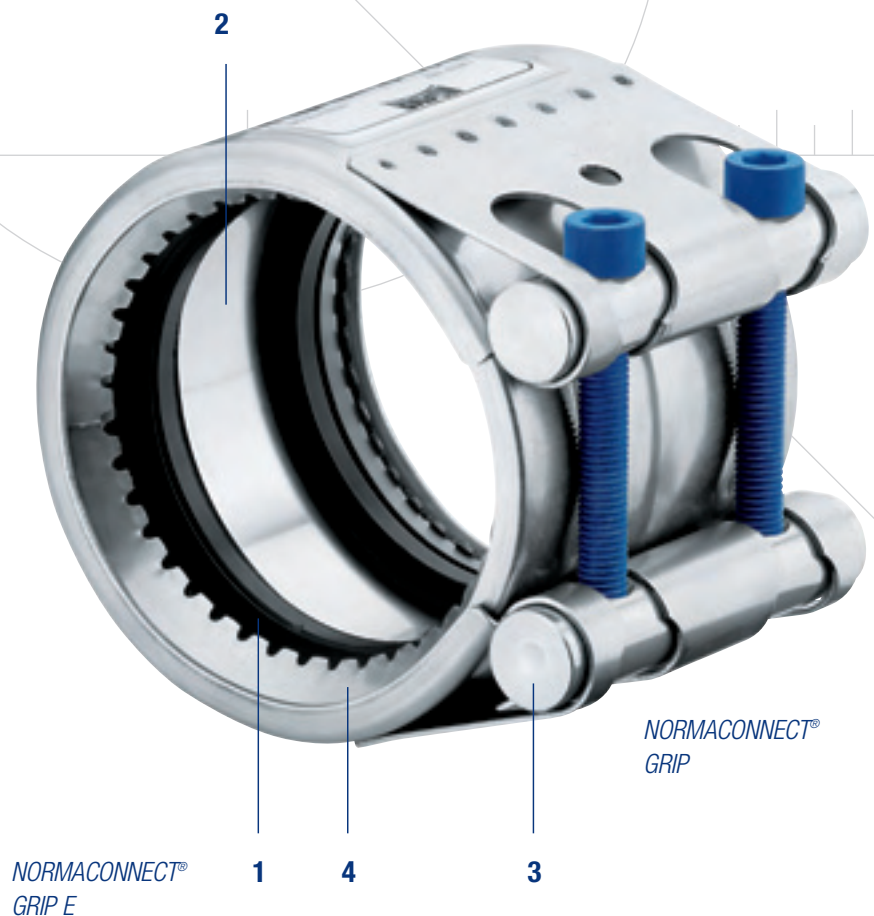
THE STRONG PIPE COUPLING

NORMACONNECT® GRIP/GRIP E axial restraint pipe couplings are used to connect metal pipes. The anchoring ring with conically stamped teeth indents into the pipe surface (steel, stainless steel or cast iron) and provides safe and strong axial restraint. Owing to the special design the coupling can withstand even high vibration loads.

NORMACONNECT® GRIP/GRIP E Features:

- 1. Double-lip sealing system*
- 2. Standard strip insert*
- 3. Heavy duty lock bars*
- 4. Anchoring ring with conically stamped teeth

* For details refer to Product benefits pages 6–7.



NORMACONNECT® GRIP E

NORMACONNECT® GRIP

Enquiries/ordering

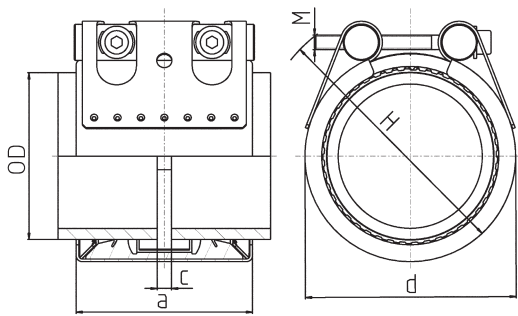
When making enquiries or placing orders please indicate:

Example:

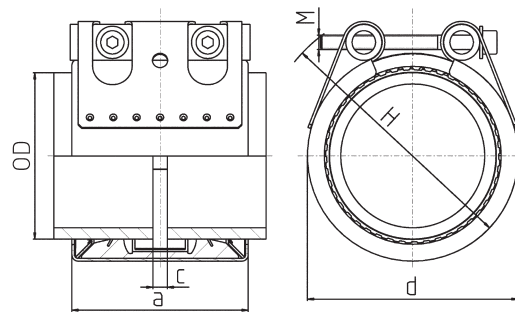
- | | |
|---|------|
| 1. The type (GRIP/GRIP E) | GRIP |
| 2. The required material (W2,W4,W5), (cf. page 10) | W5 |
| 3. The pipe outside diameter OD, (cf. table) | 88.9 |
| 4. The sealing sleeve material (EPDM, NBR) | EPDM |

For this example, the order text would read: **NORMACONNECT® GRIP – W5 – 88.9 – EPDM**



NORMACONNECT® GRIP/GRIP E



NORMACONNECT® GRIP



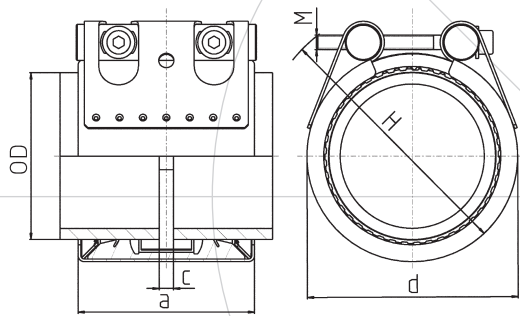
NORMACONNECT® GRIP E

OD	Clamping range	PN ¹⁾	WP ²⁾	C _{max}	Dimensions		
					a	d	H
(mm)	OD _{min} – OD _{max} (mm)	 (bar)	 (bar)	(mm)	(mm)	clamped approx. (mm) approx. (mm)	
26.9	26.4 – 27.5	16	70	3	67	50	70
28.0	27.5 – 28.5	16	70	3	67	50	70
30.0	29.5 – 30.6	16	70	3	67	50	70
33.7	33.0 – 34.3	16	60	3	67	55	75
35.0	34.5 – 35.6	16	60	8	63	55	75
38.0	37.5 – 38.6	16	60	8	63	60	80
42.4	41.7 – 43.0	16	50	8	63	65	85
44.5	44.0 – 45.1	16	50	8	63	65	85
48.3	47.6 – 50.5	16	50	8	63	70	90
54.0	53.3 – 54.6	16	50	17	78	75	95
57.0	56.3 – 57.7	16	50	17	78	80	100
60.3	59.5 – 61.0	16	40	17	78	85	105
63.0	62.2 – 63.9	16	40	17	78	85	105
70.0	69.0 – 71.0	16	40	25	98	90	110
73.0	72.1 – 73.8	16	40	25	98	95	115
76.1	75.2 – 77.0	16	35	25	98	100	120
78.0	77.1 – 78.9	16	35	25	98	100	120
80.0	79.0 – 80.8	16	35	25	98	100	120
84.0	83.0 – 85.0	16	35	25	98	105	125
88.9	87.0 – 89.9	16	35	25	98	110	130
98.0	96.9 – 99.0	16	35	25	98	120	140
101.6	100.4 – 102.8	16	35	25	98	125	145
104.0	102.8 – 106.1	16	35	25	98	125	145
108.0	106.8 – 109.2	16	35	25	98	130	150
110.0	108.8 – 111.4	16	35	25	98	130	150
114.3	113.0 – 115.5	16	35	25	98	135	155
118.0	116.6 – 119.2	16	35	25	98	140	160
122.0	120.8 – 123.2	16	32	35	115	145	165
125.0	123.6 – 126.5	16	32	35	115	145	165
129.0	127.6 – 131.1	16	32	35	115	155	185
133.0	131.5 – 134.4	16	32	35	115	160	190
139.7	138.1 – 141.6	16	32	35	115	165	195
141.3	139.6 – 142.8	16	32	35	115	170	200
144.0	142.4 – 145.5	16	32	35	115	170	200
154.0	152.3 – 156.1	16	32	35	115	180	210
159.0	157.3 – 160.7	16	32	35	115	185	215
168.3	166.5 – 170.1	16	32	35	115	195	225
170.0	168.2 – 171.9	16	32	35	115	195	225

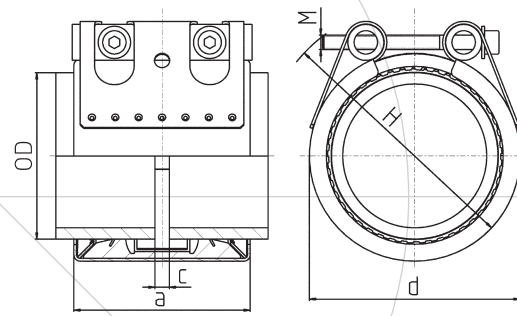
¹⁾ PN (nominal pressure) is the max. admissible working pressure in shipbuilding, based on a safety factor of ≥ 4 .

²⁾ WP is the max. working pressure in industrial applications, based on a safety factor as per NORMA specification.

NORMACONNECT® GRIP/GRIP E



NORMACONNECT® GRIP



NORMACONNECT® GRIP E

OD (mm)	Clamping range OD _{min} – OD _{max} (mm)	MAWP ¹⁾ (bar)		WP ²⁾ (bar)		C _{max} (mm)	Clamping range			
		GRIP	GRIP E	GRIP	GRIP E		a (mm)		d clamped approx. (mm)	
193.7	192.0 – 196.0	16.0	10.0	32.0	20.0	35	142	141	225	255
206.0	202.0 – 208.0	16.0	10.0	32.0	20.0	35	142	141	240	270
219.1	216.0 – 221.0	16.0	10.0	32.0	20.0	35	142	141	250	280
225.0	222.0 – 227.0	13.0	10.0	26.5	16.0	35	142	140	255	285
229.9	228.0 – 232.0	13.0	5.5	26.0	16.0	35	142	140	260	290
244.5	242.0 – 247.0	12.0	5.5	24.5	15.0	35	142	140	275	305
254.0	250.0 – 256.0	11.5	5.5	22.5	14.0	35	142	140	285	315
267.0	264.0 – 269.0	11.0	5.5	22.5	13.5	35	142	140	300	330
273.0	270.0 – 275.0	11.0	5.5	22.0	13.0	35	142	140	305	335
306.0	302.0 – 308.0	9.5	5.5	19.5	10.5	35	142	140	340	370
323.9	320.0 – 327.0	6.5	3.0	13.0	9.5	35	142	140	355	385
326.0	322.0 – 329.0	6.5	3.0	13.0	9.5	35	142	140	360	390
355.6	352.0 – 359.0	6.0	2.7	12.0	8.5	35	142	140	390	420
406.4	402.0 – 410.0	4.5	2.5	9.0	7.0	35	142	140	440	470
429.0	426.0 – 431.0	4.0	2.5	8.5	6.5	35	142	140	460	490
442.0	439.0 – 444.0	4.0	2.5	8.0	6.5	35	142	140	475	505
457.2	454.0 – 459.0	4.0	2.5	8.0	6.0	35	142	140	490	520
508.0	505.0 – 510.0	2.5	2.0	5.0	4.0	35	142	140	540	570
531.0	528.0 – 534.0	2.5	1.5	5.0	4.0	35	142	140	565	595
558.8	556.0 – 562.0	2.0	1.5	4.5	3.5	35	142	140	590	620
609.6	606.0 – 613.0	1.5	1.0	3.0	2.0	35	142	140	640	670
634.0	631.0 – 637.0	1.5	---	3.0	---	35	142	---	665	695
711.2	707.0 – 715.0	1.5	---	2.5	---	35	142	---	745	775

¹⁾ MAWP (maximum allowable working pressure) is the max. admissible working pressure in shipbuilding, based on a safety factor of ≥ 4 .

²⁾ WP is the max working pressure in industrial applications, based on a safety factor as per NORMA specification.

For the pipes to be joined the max. **difference in diameter** must not exceed 5 mm.



NORMACONNECT® GRIP E-FP

THE FIRE RESISTANT COUPLING

NORMACONNECT® GRIP E-FP pipe couplings with integrated flame protection are used with applications in the marine sector (civil and military) as well as in sprinkler systems. For this purpose the GRIP E type has been equipped with an additional housing made from stainless steel plus a fire-resistant lining which can resist temperatures of up to 900°C. The pipe coupling meets the newest VdS directives, IACS P2.11 and ISO 19921/22. Sizes, pressures and dimensions on request.

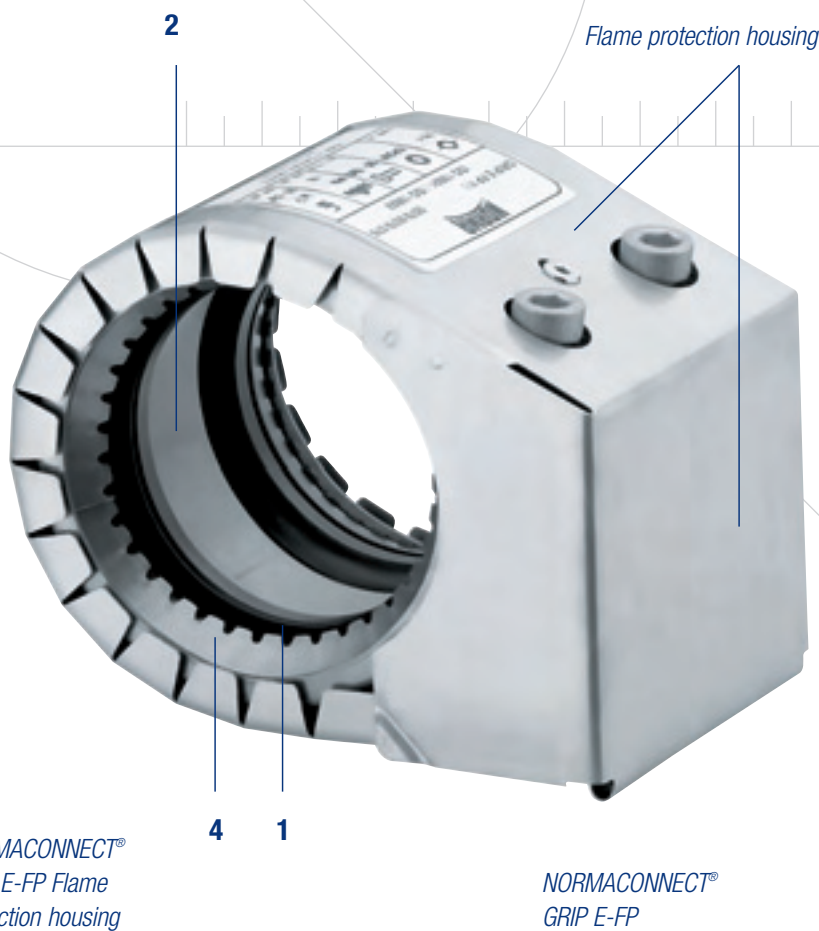
NORMACONNECT® GRIP E-FP Features:

- 1. Double-lip sealing system*
- 2. Standard strip insert*
- 4. Conically stamped anchoring ring*

* For details refer to Product benefits pages 6–7.



NORMACONNECT®
GRIP E-FP Flame
protection housing



NORMACONNECT®
GRIP E-FP

Enquiries/ordering

When making enquiries or placing orders please indicate
(Available in sizes 30.0 up to 406.4 mm):

- | | |
|---|-----------|
| 1. The type (GRIP E-FP) | GRIP E-FP |
| 2. The required material (W5), (cf. page 10) | W5 |
| 3. The pipe outside diameter OD, (cf. table) | 406.4 |
| 4. The sealing sleeve material (EPDM, NBR) | EPDM |

Example:

For this example, the order text would read: **NORMACONNECT® GRIP E-FP – W5 – 406.4 – EPDM**



NORMACONNECT® PLAST GRIP/PLAST GRIP E

THE COUPLING FOR PLASTIC PIPES

NORMACONNECT® PLAST GRIP /PLAST GRIP E axial restraint pipe couplings are used to connect plastic pipes. The specially designed anchoring ring featuring flat rows of teeth engages into the pipe surface without damaging the plastic material. The force applied is distributed evenly across the pipe surface.

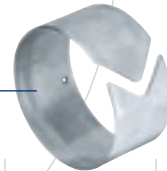
NORMACONNECT® PLAST GRIP /PLAST GRIP E Features:

1. Double-lip sealing system*
2. Standard strip insert*
3. Heavy duty lock bars*
4. Anchoring ring*

* For details refer to Product benefits pages 6–7.

6. Optional support sleeve

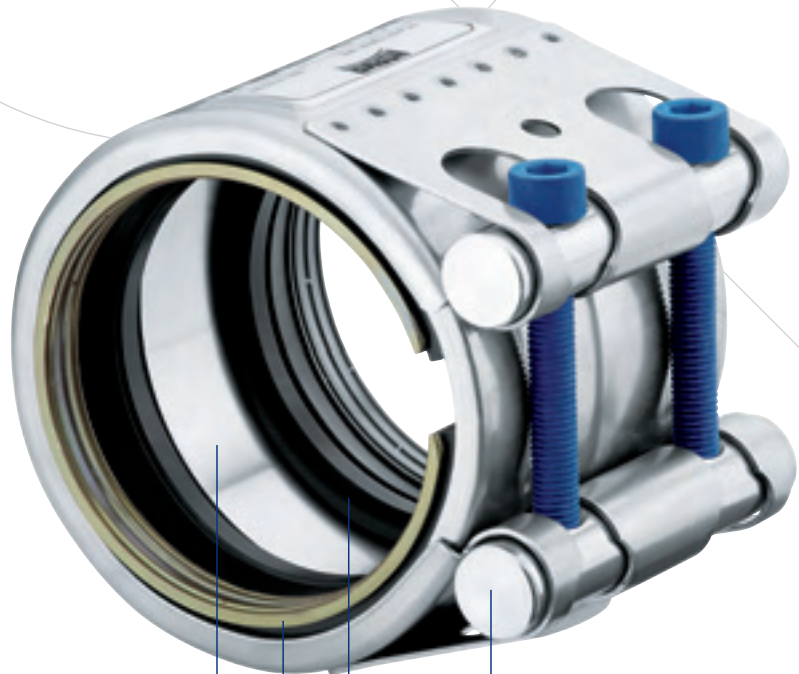
When joining plastic pipes made from PE and PP a support sleeve must be used. If the pipes to be joined are made from soft thermoplastic material (e. g. PE) the use of a support sleeve is mandatory. The support sleeve is inserted into the pipe end within the area to be joined and thus protects the pipe from being deformed.



6



NORMACONNECT®
PLAST GRIP E



2

4

1

3

NORMACONNECT®
PLAST GRIP

Enquiries/ordering

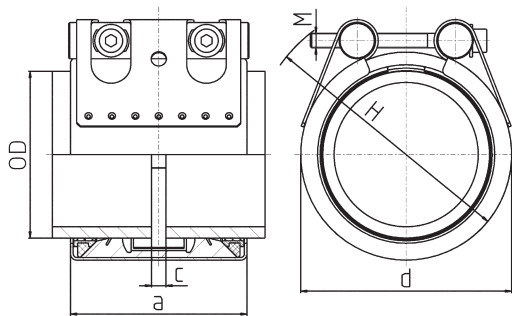
When making enquiries or placing orders please indicate:

Example:

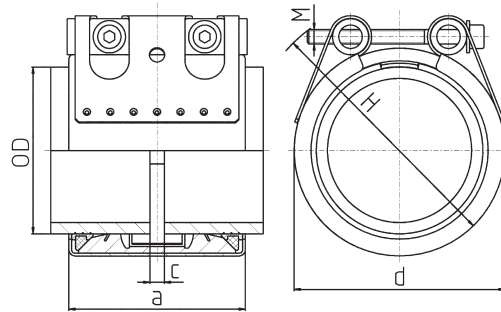
- | | |
|---|------------|
| 1. The type (PLAST GRIP/PLAST GRIP E) | PLAST GRIP |
| 2. The required material (W2, W5), (cf. page 10) | W5 |
| 3. The pipe outside diameter OD, (cf. table) | 90 |
| 4. The sealing sleeve material (EPDM, NBR) | EPDM |

For this example, the order text would read: **NORMACONNECT® PLAST GRIP – W5 – 90 – EPDM**



NORMACONNECT® PLAST GRIP/PLAST GRIP E



NORMACONNECT® PLAST GRIP



NORMACONNECT® PLAST GRIP E

OD (mm)	Clamping range OD _{min} – OD _{max} Plastics (mm)	PN ¹⁾  (bar)	WP ²⁾  (bar)	C _{max} (mm)	Clamping range		
					a (mm)	d clamped approx. (mm)	H approx. (mm)
40.0	39.0 – 40.5	16	16	8	62	60	80
42.4	41.7 – 43.0	16	16	8	62	65	85
48.3	47.6 – 49.5	16	16	8	62	70	90
50.0	49.0 – 50.5	16	16	8	62	70	90
60.3	59.5 – 61.0	16	16	17	78	85	105
63.0	62.0 – 63.5	16	16	17	78	85	105
73.0	72.0 – 74.0	16	16	25	98	95	115
75.0	74.0 – 76.0	16	16	25	98	100	120
76.0	75.0 – 77.0	16	16	25	98	100	120
88.9	88.0 – 90.0	16	16	25	98	110	130
90.0	89.0 – 91.0	16	16	25	98	110	130
101.6	100.4 – 102.8	16	16	25	98	125	145
110.0	109.0 – 111.0	16	16	25	98	130	150
114.3	113.0 – 115.5	16	16	25	98	135	155
125.0	124.0 – 126.0	16	16	35	115	150	170
140.0	139.0 – 141.0	16	16	35	115	160	180
141.3	138.1 – 141.6	16	16	35	115	165	185
160.0	159.0 – 162.0	16	16	35	115	180	200
168.3	166.5 – 170.1	16	16	35	115	190	210
180.0	178.0 – 182.0	16	16	35	142	210	240
200.0	198.0 – 202.0	16	16	35	142	230	260
219.1	217.0 – 222.0	16	16	35	142	250	280
225.0	222.0 – 227.0	10	10	35	142	255	285
250.0	247.0 – 253.0	10	10	35	142	280	310
273.0	271.0 – 276.0	10	10	35	142	305	335
280.0	277.0 – 283.0	10	10	35	142	310	340
315.0	311.0 – 318.0	10	10	35	142	345	375
323.9	320.0 – 327.0	6	6	35	142	355	385
355.0	352.0 – 359.0	6	6	35	142	385	415
400.0	396.0 – 404.0	6	6	35	142	430	460
406.4	402.0 – 410.0	6	6	35	142	440	470

¹⁾ PN (nominal pressure) is the max. admissible working pressure in shipbuilding, based on a safety factor of ≥ 4 .

²⁾ WP is the max. working pressure in industrial applications, based on a safety factor as per NORMA specification.

NORMACONNECT® COMBI GRIP/COMBI GRIP E

THE COMBINING PIPE COUPLING

NORMACONNECT® COMBI GRIP/COMBI GRIP E axial restraint pipe couplings are used to connect plastic pipes with metal pipes. For the plastic pipe the coupling features on one side a special anchoring ring with rows of flat teeth which are pressed into the pipe surface without damaging the material. At the same time the force applied is distributed evenly across the pipe surface. For the metal pipe the coupling features on the other side an anchoring ring with conically stamped teeth which grip into the pipe surface. Due to the special design of the anchoring ring the coupling can withstand even high vibration loads.

6. Optional support sleeve

When joining plastic pipes made from PE and PP a support sleeve must be used. If the pipes to be joined are made from soft thermoplastic material (e. g. PE) the use of a support sleeve is mandatory. The support sleeve is inserted into the pipe end within the area to be joined and thus protects the pipe from being deformed.

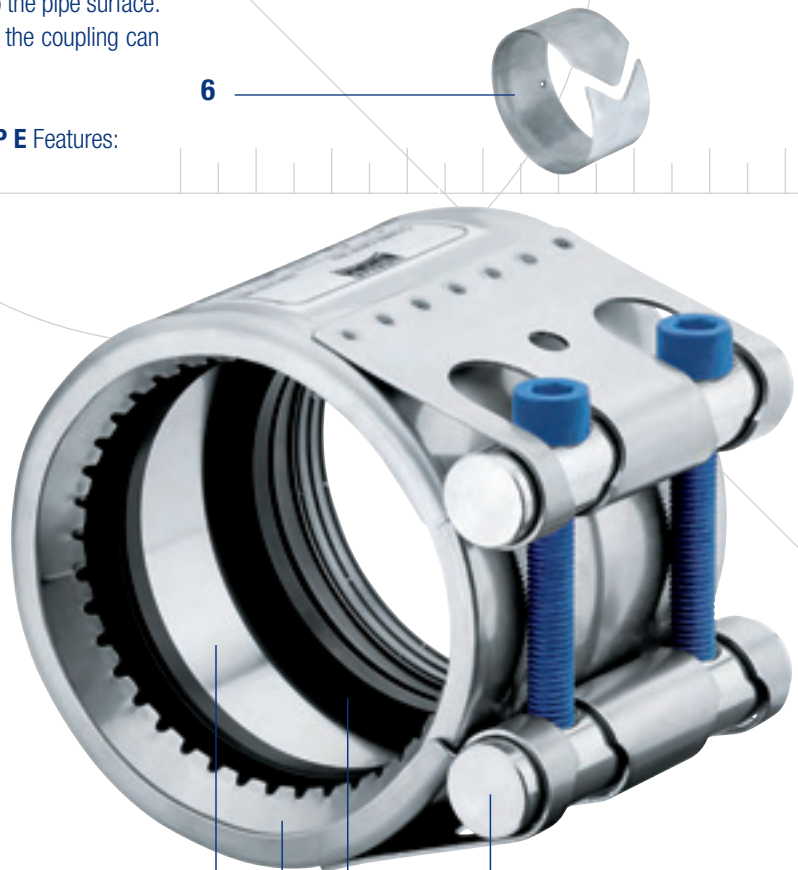
NORMACONNECT® COMBI GRIP/COMBI GRIP E Features:

1. Double-lip sealing system*
2. Standard strip insert*
3. Heavy duty lock bars*
4. Anchoring ring*

* For details refer to Product benefits pages 6–7.



NORMACONNECT®
COMBI GRIP E



2 4 1 3 NORMACONNECT®
COMBI GRIP

Enquiries/ordering

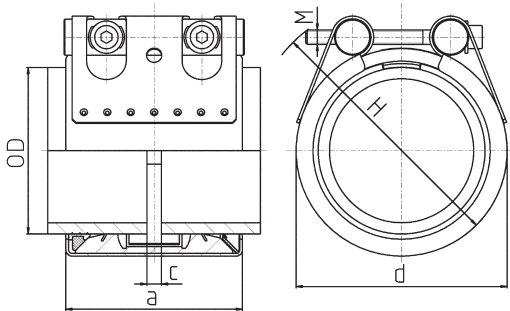
When making enquiries or placing orders please indicate:

Example:

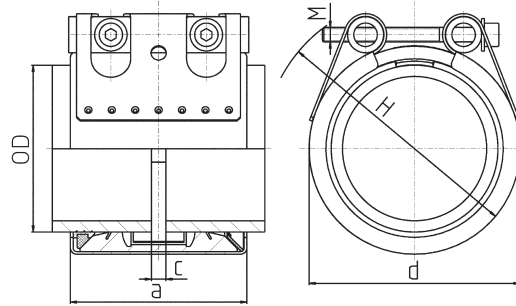
- | | |
|---|------------|
| 1. The type (COMBI GRIP/COMBI GRIP E) | COMBI GRIP |
| 2. The required material (W2, W5), (cf. page 10) | W5 |
| 3. The pipe outside diameter OD, (cf. table) | 88.9/90 |
| 4. The sealing sleeve material (EPDM, NBR) | EPDM |

For this example, the order text would read: **NORMACONNECT® COMBI GRIP – W5 – 88.9 – EPDM**



NORMACONNECT® COMBI GRIP/COMBI GRIP E



NORMACONNECT® COMBI GRIP



NORMACONNECT® COMBI GRIP E

OD	Clamping range		Clamping range		PN ¹⁾	WP ²⁾	C _{max}	Clamping range		
	OD _{min}	OD _{max}	OD _{min}	OD _{max}				a	d	H
COMBI GRIP/COMBI GRIP E (mm)	Plastics (mm)		Metal (mm)		 (bar)	 (bar)	(mm)	(mm)	clamped approx. (mm)	approx. (mm)
40.0/38.0	39.0	40.5	37.5	38.6	16	16	8	62	60	80
40.0/42.4	39.0	40.5	41.7	43.0	16	16	8	62	65	85
42.4/42.4	41.7	43.0	41.7	43.0	16	16	8	62	65	85
48.3/48.3	47.6	50.5	47.6	50.5	16	16	8	62	70	90
50.0/48.3	49.0	50.5	47.6	50.5	16	16	8	62	70	90
60.3/60.3	59.5	61.0	59.5	61.0	16	16	17	78	85	105
63.0/60.3	62.0	63.5	59.5	61.0	16	16	17	78	85	105
73.0/73.0	72.0	74.0	72.1	73.8	16	16	25	98	95	115
75.0/76.1	74.0	76.0	75.2	77.0	16	16	25	98	100	120
88.9/88.9	88.0	90.0	87.0	89.9	16	16	25	98	110	130
90.0/88.9	89.0	91.0	87.0	89.9	16	16	25	98	110	130
101.6/101.6	100.4	102.8	100.4	102.8	16	16	25	98	125	145
110.0/108.0	109.0	111.0	106.8	109.2	16	16	25	98	130	150
110.0/114.3	109.0	111.0	113.0	115.5	16	16	25	98	135	155
114.3/114.3	113.0	115.5	113.0	115.5	16	16	25	98	135	155
125.0/129.0	124.0	126.0	127.6	131.1	16	16	35	115	150	170
140.0/139.7	139.0	141.0	138.1	141.6	16	16	35	115	160	180
141.3/141.3	138.1	141.6	139.6	142.8	16	16	35	115	165	185
160.0/159.0	159.0	162.0	157.3	160.7	16	16	35	115	180	200
168.3/168.3	166.5	170.1	166.5	170.1	16	16	35	115	190	210
200.0/204.0	198.0	202.0	202.0	206.0	16	16	35	142	235	265
219.1/219.1	217.0	222.0	216.0	221.0	16	16	35	142	250	280
225.0/219.1	222.0	227.0	216.0	221.0	10	10	35	142	255	285
225.0/222.0	222.0	227.0	220.0	224.0	10	10	35	142	255	285
250.0/254.0	247.0	253.0	250.0	256.0	10	10	35	142	285	315
273.0/273.0	271.0	276.0	270.0	275.0	10	10	35	142	305	335
280.0/273.0	277.0	283.0	270.0	275.0	10	10	35	142	310	340
323.9/323.9	320.0	327.0	320.0	327.0	6	6	35	142	355	385
355.0/355.6	351.0	359.0	352.0	359.0	6	6	35	142	390	420
400.0/406.4	396.0	404.0	402.0	410.0	6	6	35	142	440	470
406.0/406.4	402.0	410.0	402.0	410.0	6	6	35	142	440	470

¹⁾ PN (nominal pressure) is the max. admissible working pressure in shipbuilding, based on a safety factor of ≥ 4 .

²⁾ WP is the max. working pressure in industrial applications, based on a safety factor as per NORMA specification.

NORMACONNECT® FGR Accessories



Support sleeve

To be used with NORMACONNECT® PLAST GRIP/PLAST GRIP E, COMBI GRIP/COMBI GRIP E in W5 (1.4571) material. For copper and CuNiFe pipes an optional support sleeve made from brass is available on request.

	S-3.2 (SDR 7.5)	S-4 (SDR 9)	S-5 (SDR 11)	S-6.3 (SDR 13.6)	
Ø OD mm	Ø di* mm	Ø di* mm	Ø di* mm	Ø di* mm	VPE
40	29	31	32.6	34	10
50	36	38.8	40.8	42.6	10
63	45.6	48.8	51.4	53.6	10
75	54.4	58.2	61.4	64	10
90	65.4	69.5	73.6	76.8	10
110	79.5	85.4	90	93.8	10
125	91	97	102.2	106.6	5
140	102.2	108.6	114.6	119.4	5
160	116.2	124.2	130.8	136.4	5

* Additional diameters on request.

	S-8 (SDR 17)	S-10 (SDR 21)	S-12.5 (SDR 26)	S-16 (SDR 33)	
Ø OD mm	Ø di* mm	Ø di* mm	Ø di* mm	Ø di* mm	VPE
40	35.2	-	36	-	10
50	44	45.6	46	-	10
63	55.4	57	58.2	59	10
75	66	67.8	69.5	70.4	10
90	79.5	81.4	83	84.4	10
110	96.8	99.4	101.6	103.2	10
125	110.2	113	115.4	117.2	5
140	123.4	126.6	129.2	131.4	5
160	141	144.6	147.6	150.2	5

* Additional diameters on request.

Fitting pliers/fitting belt

for NORMACONNECT® REP E

Ø OD mm	Text for ordering
38–168.3 mm	Fitting pliers for REP E
180–1200 mm	Fitting belt for REP E





NORMA® – Distribution partners/Field service in Germany

Gaßmann GmbH
01307 Dresden
Tel.: (0170) 3233544
info@gassmannmbh.de

Gaßmann GmbH
Georg-Agricola-Straße 14
06712 Zeitz
Tel.: (0160) 97725962
info@gassmannmbh.de

Heinrich Siggel GmbH
Waldstraße 1

14163 Berlin
Tel.: (030) 8029013
Fax: (030) 8029014
siggel-gmbh@t-online.de

Heinrich Lauterbach GmbH
Billwerder Billdeich 605 b
21033 Hamburg
Tel.: (040) 723728-0
Fax: (040) 723728-25
info@lauterbach-gmbh.de

Lappenberg GmbH
Neidenburger Straße 14
28207 Bremen
Tel.: (0421) 4989394
Fax: (0421) 443192
info@lappenberg.de

Jens-Hendrik Wedekind
Bürgermeister-
Wehrmann-Str. 25 e
30826 Garbsen
Tel. (05131) 451286
Fax: (06181) 403-1587
jens-hendrik.wedekind@normagroup.com

Neumann GmbH
Mannheimer Straße 12
30880 Laatzen
Tel.: (0511) 821010
Fax: (0511) 8250280
pneumann@neumann-industrie.de

Dirk Hagenkord
Allerstraße 31
33378 Rheda-Wiedenbrück
Tel.: (05242) 379707
Fax: (06181) 403-1260
dirk.hagenkord@normagroup.com

Gaßmann GmbH
Robert-Bosch-Straße 1
37308 Heiligenstadt
Tel.: (03606) 5510-0
Fax: (03606) 5510-50

Gustav Rasmussen
Monschauer Straße 7
40549 Düsseldorf
Tel.: (0211) 563498-0
Fax: (0211) 56349814
info@norma-lager.de

COWI Gebr. Conrad GmbH
Daimlerring 4
65205 Wiesbaden
Tel.: (06122) 6005-0
Fax: (06122) 6355
info@cowi-gmbh.de

Thorsten Becker
Schillerstraße 10
67229 Laumersheim
Tel.: (06238) 4154
Fax: (06181) 403-1271
thorsten.becker@normagroup.com

Kohler GmbH
Am Westkai 53
70329 Stuttgart
Tel.: (0711) 93235430
Fax: (0711) 93235469
info@kohler.de

Kohler GmbH
Rötelstraße 17
74172 Neckarsulm
Tel.: (07132) 321-0
Fax: (07132) 321-190
info@kohler.de

Kohler GmbH
Neckarstraße 47/1
78727 Oberndorf
Tel.: (07423) 81098-0
Fax: (07423) 81098-29
info@kohler.de

Willy Kunzer GmbH
Römerstraße 17
85661 Forstinning
Tel.: (08121) 220-0
Fax.: (08121) 220-50
info@kunzer.de
www.kunzer.de

Kohler GmbH
Benzstraße 6
89079 Ulm-Donautal
Tel.: (0731) 159990
Fax: (0731) 1599929
info@kohler.de

Krisch GmbH
Wendelsteiner Straße 16 b
90469 Nürnberg
Tel.: (0911) 481966
Fax: (0911) 487592
krischgmbh@aol.com

SHIPBUILDING APPLICATIONS

Wilhelm Sander Handel GmbH
Plantage 15
28215 Bremen
Tel.: (0421) 35011-0
Fax: (0421) 350114-33
info@sander-handel.de

AUSTRALIA

NORMA Pacific Pty. Ltd.
85 Merrindale Drive
South Croydon, Vict. 3136
Tel.: ++61/3/9761 4416
Fax: ++61/3/9761 4030
sales@normapacific.com.au

CHINA

Jiangyin NORMA
Automotive Products Co. Ltd.
No. 1555 Zhou Zhuang Cheng Yang Road
CN-214423 JiangYin/JiangSu China
Tel.: ++86/510/86239000
Fax: ++86/510/86232666
info@normacn.com
www.normacn.com

FRANCE

NORMA France S.A.S.
Z.I. de la Chenois/P.O. Box 63
F-54153 Briey
Tel.: ++33/3/8247 1300
Fax: ++33/3/8246 0783
contacts@normagroup.com

ITALY

ABA italia S.p.A. Z.I.
Loc. Bolina 25085
Gavardo (BS) Italy
Tel.: ++39 (0)365 31 141/2
Fax: ++39 (0)365 37 34 20
info@serratub.it

MALAYSIA

NORMA Pacific (Asia) Pte. Ltd.
(Representative Office)
No. 151-3-5A, Wisma Mutiara Puchong
6th Mile, Jalan Puchong
58200 Kuala Lumpur
Tel.: ++60/03/7781 2175
Fax: ++60/03/7781 2175
jng@norma.com.sg

SINGAPORE

NORMA Pacific (Asia) Pte Ltd.
Block 207, Woodlands Avenue 9
Woodlands Spectrum II, #06-56
Singapore 738955
Tel.: ++65/6759 7955
Mobile: ++65/915 27 162
Fax: ++65/6759 8092
ashley@norma.com.sg

SPAIN

FIJACIONES NORMA S.A.
Narcis Monturiol, 116–118
E-08902 L'Hospitalet de Llobregat
Tel.: ++34/93/432 9955
Fax: ++34/93/432 0026
norma@norma-es.com

THAILAND

Inter Business Alliance Co LTD
NORMA Pacific (Thailand)
208 Moo.5 Srivalee-Rungsit 1
Rungsit-Nakornnayok Rd
Prachatipat, Tanyaburi
Patumtani 12130
Bangkok
Tel.: ++66/02/533 0745
Fax: ++66/02/974 0978
ashley@norma.com.sg

UNITED KINGDOM

NORMA UK Limited
Weber Road, New Greenham Park
GB-Newbury, Berkshire RG19 6HW
Tel.: ++44 1635 521880
Fax: ++44 1635 57403
sales@norma.co.uk

USA

ABA of America Inc.
1445 Huntwood Drive
Cherry Valley, IL61016-9560, USA
Tel.: ++1-815-332-5170
Fax: ++1-815-332-9090
info@abaofamerica.com

NORMACONNECT® FGR – Distribution partners worldwide

SALES OFFICES AND DISTRIBUTION PARTNERS WORLDWIDE

The following sales offices/distribution partners are prepared to offer specialist advice regarding the NORMACONNECT® product range.

AUSTRIA

NIROTEC Aschl GmbH
Geisensheim 6
A-4632 Pichl bei Wels
Tel.: ++43/7247/87 78
Fax: ++43/7247/80 05
nirotec@netway.at
www.nirotec.at

BELGIUM

A.D.R. SPRL/BVBA
Genaustraet 6
B-2000 Antwerpen
Tel.: ++32/3/233 57 61
Fax: ++32/3/233 57 71
sales@adr.be
www.adr.be

CZECH REPUBLIC

MATPRO
Kladenská 497
CZ-278 01 Kralupy n. Vlt. III
Tel.: ++42/315/722 332-3
Fax: ++42/315/722 444
info@matpro.cz

DENMARK

Brd. Klee
Gadagervej 11
P.O. Box 7
DK-2620 Albertslund
Tel.: ++45/4386 8333
Fax: ++45/4386 8388
klee@brd-klee.dk

FINLAND

Teknoma Oy
Tiistinnütyntie 4
FIN-02231 Espoo
Tel.: ++358/9/6810 21
Fax: ++358/9/6810 2222
y.p@teknoma.fi
www.teknoma.fi

GREECE

S.A. Spyrou
Frangon Str. 22
GR-54625 Thessaloniki
Tel.: ++30/31/532 900 + 974
Fax: ++30/31/531 313
spyrstam@spark.net.gr

HUNGARY

NORMA-Ker Kft.
Temesvár u. 19-21
H-1116 Budapest
P.O. Box 29
H-1509 Budapest
Tel.: ++36/1/204 7940
Fax: ++36/1/204 7941
norma@matavnet.hu

LUXEMBURGH

Friederich Hydropart S.a.r.l.
16, Route d'Esch
P.O. Box 38
L-3801 Schifflange
Tel.: ++352/5452 44
Fax: ++352/5452 48
contact@hydropart.lu

NETHERLANDS

Georg Fischer WAGA N.V.
Lange Veenteweg 19
NL-8161 PA Epe
P.O. Box 290
NL-8160 AG Epe
Tel.: ++31/578/678 378
Fax: ++31/578/620 848
sales@waga.nl
www.waga.nl

Schiffsbau und Offshore
Manfred J. Niemann Nederland B.V.
Printerweg 7
NL-3821 Amersfoort
Tel.: ++31 33 4508200
Fax: ++31 33 4560541
E-Mail: info@niemet.nl
www.niemet.nl

POLAND

NORMA Polska Sp.z o.o.
ul. Długa 2, Ślawinów
42-436 Pilica
Tel.: ++48/32/637 62 28
Fax: ++48/32/637 26 70
centrala@normavariant.pl

SLOVAC REPUBLIC

Alba s.r.o.
Jilemnického 8
SK-0360 Martin
Tel.: ++421/8424239 748
Fax: ++421/8424230 813
alba@alba.sk

SLOVENIA

BMT d.o.o.
Nade Ovcakove ul. 17
SI-1000 Ljubljana
Tel.: ++386/1/565 8170
Fax: ++386/1/565 8175

SOUTH AFRICA

International Clamps (Pty) Ltd
P.O. Box 581
SA-2012 Bergvlei
Tel.: ++27/11/809 6500
Fax: ++27/11/887 7458
norma@icclamps.co.za
www.icelamps.co.za

SWITZERLAND

Georg Fischer +GF+
Georg Fischer Rohrleitungssysteme
(Schweiz) AG
CH-8201 Schaffhausen
Tel.: ++41 52 6313026
Fax: ++41 52 6312897
E-Mail:
info@rohrleitungssysteme.georgfischer.ch
www.piping.georgfischer.ch

SYRIA

Nercess S. Karamanoukian
P.O. Box 5204
Aleppo
Tel.: ++963/21/2240 658
Fax: ++963/21/2242 227
nerkar@net.sy

UNITED ARAB EMIRATES

Arwani Trading Est.
P.O. Box 8783
Dubai
Tel.: ++971/4/28 28 223
Fax: ++971/4/28 28 207
arwanimk@emirates.net.ae

Notice







The NORMA® Product Range

- **NORMACLAMP®**
= Hose Clamps
- **NORMACONNECT®**
= Pipe Connections
- **NORMAFIX®**
= Retaining Products
- **NORMAQUICK®**
= Quick Connectors
- **NORMAFLEX®**
= Fluid Systems
- **NORMAPLAST®**
= Plastic Products

NORMA Germany GmbH

Postfach 11 49 · D-63461 Maintal
Edisonstraße 4 · D-63477 Maintal

Tel.: +49 (61 81) 403-0

Fax.: +49 (61 81) 403-2 10

www.normagroup.com

info@normagroup.com

NORMA® is a registered trade mark of
NORMA Germany GmbH.

www.normagroup.com

NORMA Group



The NORMA® Product Range

- **NORMACLAMP®**
= Hose Clamps
- **NORMACONNECT®**
= Pipe Connections
- **NORMAFIX®**
= Retaining Products
- **NORMAQUICK®**
= Quick Connectors
- **NORMAFLEX®**
= Fluid Systems
- **NORMAPLAST®**
= Plastic Products

NORMA UK Limited

Weber Road, New Greenham Park
Newbury, Berkshire RG19 6HW

Tel.: ++44 1635 52 1880

Fax: ++44 1635 57 403

www.normagroup.com

sales@norma.co.uk

NORMA® is a registered trade mark of
NORMA Germany GmbH.

www.normagroup.com

NORMA Group